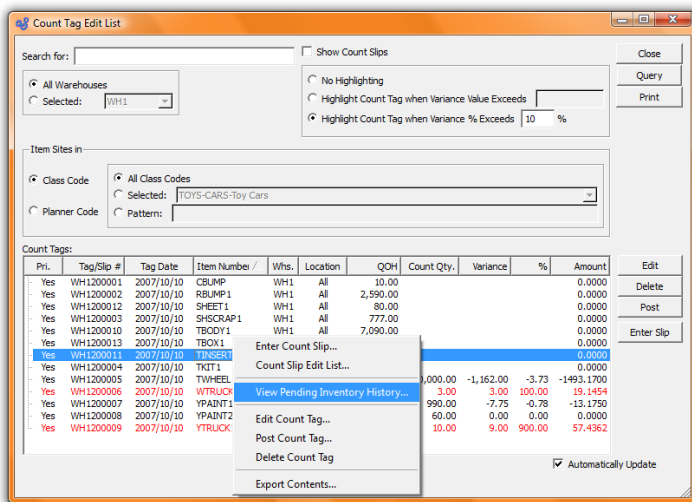


Inter-Warehouse Transfer Order (New, List)

Physical Inventory

- Create Count Tags (by Planner Code, Class Code, Item)
- Create Cycle Count Tags
- Enter Count Slip, Tag
- Enter Misc. Inventory Count
- Zero Uncounted Count Tags
- Freeze/Thaw Item Sites
- Post Count Slips, Tags
- Purge Posted Count Slips, Tags
- Reports
- Frozen Item Sites
- Count Slip/Tag Edit List
- Count Slips
- Count Tags (by Item, Warehouse, Class Code)



Above: Actions available during a Physical Inventory, from the Count Tag Edit List

Receiving

- New Receipt
- List Unposted Receipts
- Purchase Order Return
- Print Receiving Labels

Shipping

- Issue Stock to Shipping
- Maintain Shipping Contents
- Ship Order
- Recall Orders to Shipping

Forms

- Packing List (Batch, Batch by Ship Via)
- Shipping Forms
- Shipping Labels (by Sales Order, by Invoice)

Reports

- Backlog (by Item, Customer, Product Category)
- Summarized Backlog
- Shipments (by Sales Order, Date)

Transactions

- Adjustment
- Scrap
- Expense
- Material Receipt
- Transform
- Reset QOH Balances
- Warehouse Transfer
- Relocate Inventory

Forms

- Print Item Labels

Reports

- Item Sites (by Planner Code, Cost Cat., Class Code, Item)
- Valid Locations by Item
- Qty. on Hand (by Class Code, Item Group, Location, Item)
- Location/Lot/Serial # Detail
- Expired Inventory
- Slow Moving Inventory
- Inv. Availability (by Planner, Class, Source Vendor, Item)
- Substitute Availability
- Inventory Status (by Planner, Class, Item Group)
- Inventory History (by Planner, Cost Cat., Class Code, Item)
- Detailed Inventory History (by Location, Lot/Serial #)
- Usage Statistics (by Warehouse, Class Code, Item Group)
- Time Phased Usage Statistics

Warehouse (List, Locations)

Item Site (New, List, Workbench)

Lot/Serial Control (Comments, Location, History, Reassign)

Master Information

- Cost Categories
- Expense Categories
- Characteristics

Utilities

- Unbalanced QOH
- Update Item Controls
- ABC Class
- Cycle Count Frequency
- Item Site Lead Times
- Reorder Levels (by Item, Planner Code, Class Code)
- Order Up To Levels (by Item, Planner Code, Class Code)
- Summarize Transaction History
- Create Item Sites
- Purge Shipping Records



Note: Functionality in orange type is available in the Standard and OpenMFG Editions; functionality in blue type is available only in OpenMFG.